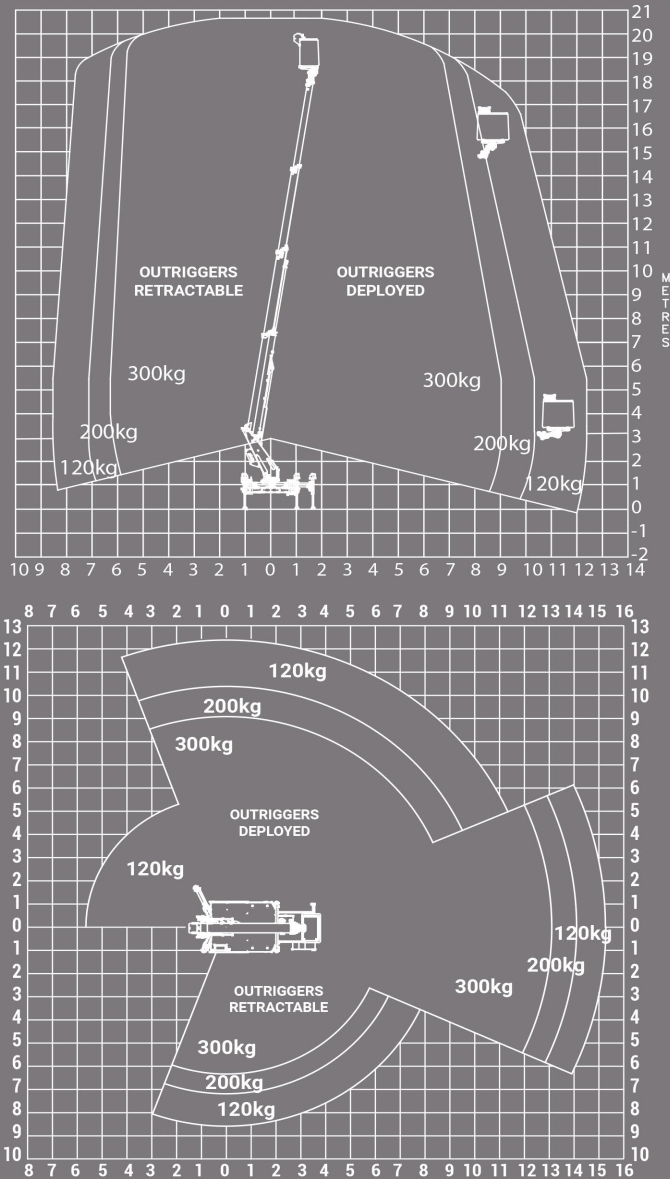


# KT20 TELESCOPIC AERIAL PLATFORM

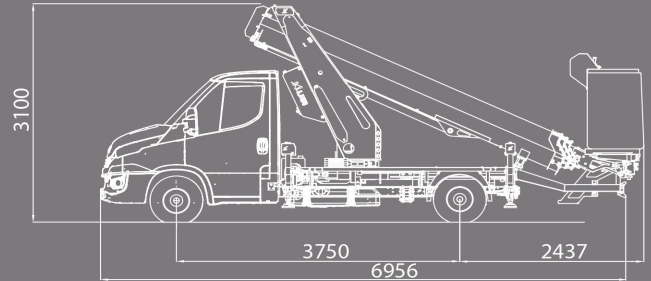
mounted on a chassis

# KT20

### WORKING DIAGRAM



### VEHICLE DRAWING



### STANDARD SPECIFICATIONS

- Engine start and stop from basket
- Independent emergency manual pump with all the features in the basket for maximum security
- Proportional controls
- Hoses and cables are inside the boom structure for maximum protection
- Double stabilization :
  - Outriggers in the template for reduced congestion in the streets (working outreach reduced)
  - Outriggers extended at the front, left side or right side for a full working outreach
- Aluminium boom for optimum stability
- Automatic stabilization (top and bottom)
- Home function with automatic stabilizer lift

### AERIAL PLATFORM OPTIONS

- Signalling devices (triflash, 2 flashing lights, reflective strips)
- 220V electric socket in the basket
- Fully opening insulated basket
- Basket BT200
- Aluminium chests and side panels
- Side ladder rack
- Toolholders in the basket

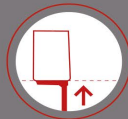
For more platform options, please contact us before ordering



20.60m  
(677")



Up to 12.50m  
(41'10")



18.60m  
(61'0")



420°



Rotating basket  
2x90°



Up to 300kg



4 outriggers  
extendable front



125 x 75 x 110cm



≤ 3.5T



### POSSIBLE TYPES OF VEHICLES

- IVECO DAILY (wheelbase 3750)
- MERCEDES 313 CDI (wheelbase 3665)

For vehicle options, please contact us before ordering

### / DEMONSTRATION ON DEMAND